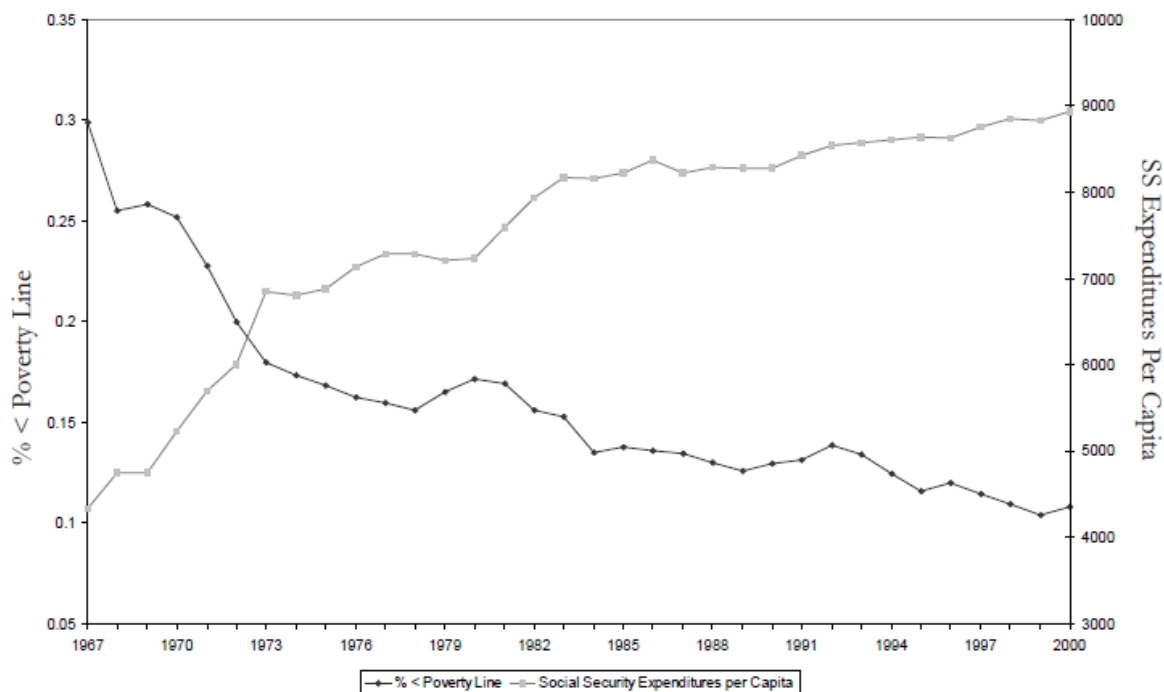


## Elderly Poverty and Social Security Expenditures Over Time

### Answer Key

**Directions:** Answer the following questions in complete sentences.

Figure 1: Elderly Poverty and Social Security Expenditures Over Time



**Source:** National Bureau of Economic Research. (2004). Elderly poverty and Social Security expenditures over time [Chart]. Retrieved from <http://www.nber.org/aginghealth/summer04/summer04.pdf>

## Questions

1. What information does the graph provide?  
*The graph depicts changes in the poverty rate of the elderly and Social Security expenditures between 1967 and 2000.*
2. Describe the relationship between the two lines.  
*The lines are moving in opposite directions. The poverty rate for the elderly has generally declined since 1967, whereas Social Security expenditures have generally increased since 1967.*
3. From the information provided in this graph, what can we infer about Social Security expenditures and the poverty rate among the elderly?  
*A decrease in poverty among the elderly is correlated with increased spending on Social Security.*
4. From the information provided in this graph, what do you hypothesize an extension of the graph to 2025 would look like? Why?  
*Answers will vary.*